

**Installation:**

1st nut should be spanned with 40 - 45Nm.

2nd nut should shall be brought at least to a snug-tight condition, with special care being given to avoid over-tightening.

Nut-marking should be made acc. to figure after torque.

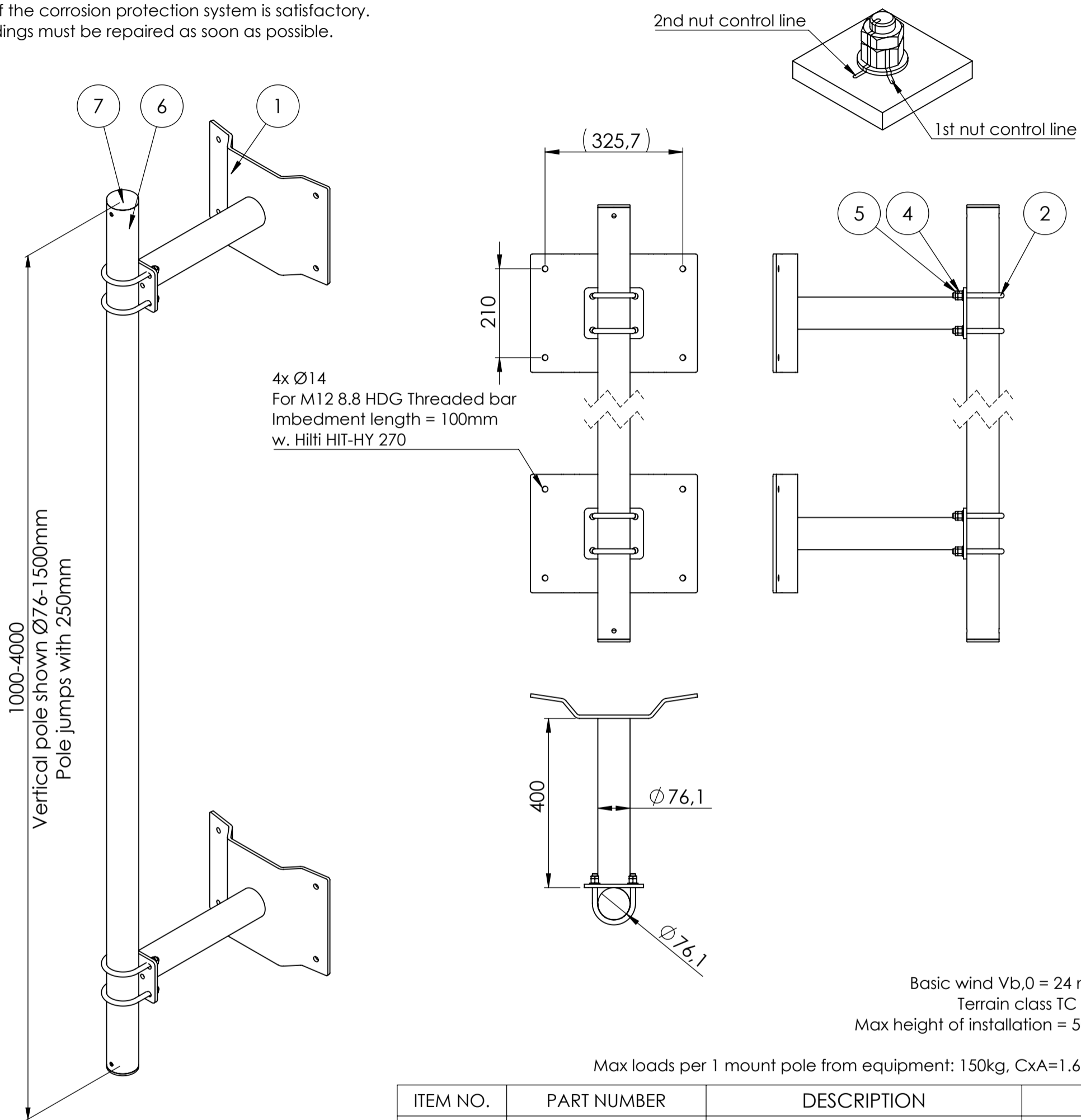
**Maintenance:**

Visual inspection of bolt torque and any loose items is made 1 year after installation, and afterwards every 5th year.

Check if the marking from bolt torque is still straight.

Check if the corrosion protection system is satisfactory.

Any findings must be repaired as soon as possible.



ITEM NO.	PART NUMBER	DESCRIPTION	
1	IBC-Ø1600-3000_H400	Horizontal pole bracket with verticale Ø60,3-76.1	2
2	U-bolt M12 C-C = 90		4
3	Washer ISO 7089 - 12		8
4	ISO - 4032 - M12 - W - N		8
5	ISO - 4035 - M12 - N		8
6	Pole Ø76-2500	Vertical pole Ø76,1 - length: 2500	1
7	GL 76x1.6-4	tubular legs for Ø76,1	2

Rev.:	Int.:	Date:	Comment
Customer.:			
Subjekt.: Antenna offset f. chimney with fixed brackets – Ø1600–3000			
Date.:	24-08-2020	Production no.:	Scale.: 1:10
Order no.:		Calculation:	Int.: SP/MRF
Drawing. No.:	IBC H400	Note.:	Format:A3
This drawing is our property and must not be copied, transferred or in any way used by a third party without our written permission			Projection:
			Tolerance: DS/EN 1090-2 DS/ISO 2768-2-L